

## \$648,998 - 331 Foxhaven Bay, Sherwood Park

MLS® #E4442935

**\$648,998**

4 Bedroom, 3.00 Bathroom, 1,511 sqft

Single Family on 0.00 Acres

Foxhaven, Sherwood Park, AB

Welcome to Foxhaven—a mature, family-friendly neighbourhood known for its quiet streets, scenic trails, & close proximity to parks, schools, & everyday essentials. Tucked into a quiet cul-de-sac, this simply stunning 4-bedrm, 3-bath bi-level offers just over 1,510 sq ft of well-appointed living space. The main floor features hardwood throughout, a spacious living room w/ large windows, a cozy FP & a beautifully updated kitchen w/ quartz counters, SS appliances, & a WI pantry. The private upper-level primary suite includes a WI closet & a 4pc ensuite w/ a soaker tub. Downstairs, the fully finished basement adds incredible versatility w/ a second FP, built-in bar, full bath, & an additional bedrm. Step outside to enjoy the beautifully landscaped backyard, ideal for warm summer evenings, & take advantage of the oversized heated garage w/ ample room for parking and storage. W/ walking trails, playgrounds & nature right at your doorstep, Foxhaven offers the best of both convenience & natural beauty.

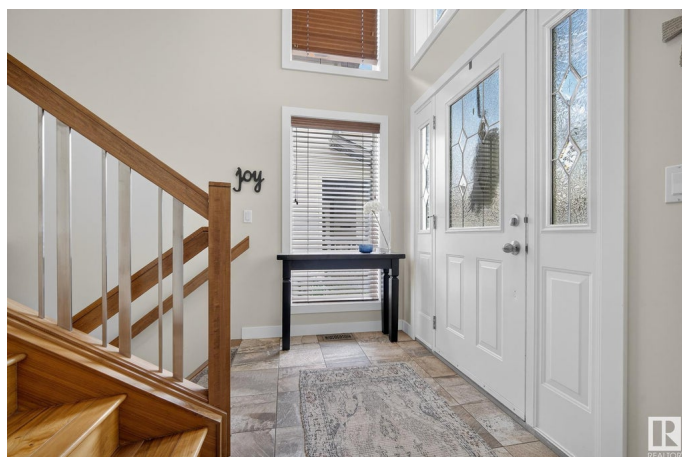
Built in 2003

### Essential Information

MLS® # E4442935

Price \$648,998

Bedrooms 4



Bathrooms	3.00
Full Baths	3
Square Footage	1,511
Acres	0.00
Year Built	2003
Type	Single Family
Sub-Type	Detached Single Family
Style	Bi-Level
Status	Active

### Community Information

Address	331 Foxhaven Bay
Area	Sherwood Park
Subdivision	Foxhaven
City	Sherwood Park
County	ALBERTA
Province	AB
Postal Code	T8A 6L1

### Amenities

Amenities	Air Conditioner, Deck, See Remarks
Parking	Double Garage Attached, Heated, Over Sized

### Interior

Interior Features	ensuite bathroom
Appliances	Air Conditioning-Central, Dishwasher-Built-In, Dryer, Garage Control, Garage Opener, Refrigerator, Stove-Gas, Washer, Window Coverings, Garage Heater
Heating	Forced Air-1, Natural Gas
Stories	2
Has Basement	Yes
Basement	Full, Finished

### Exterior

Exterior	Wood, Brick, Vinyl
Exterior Features	Fenced, Flat Site, Landscaped, Playground Nearby, Public Transportation, Schools, Shopping Nearby
Roof	Asphalt Shingles
Construction	Wood, Brick, Vinyl

Foundation                      Concrete Perimeter

**Additional Information**

Date Listed                      June 18th, 2025  
Days on Market                8  
Zoning                              Zone 25

DATA IS DEEMED RELIABLE BUT IS NOT GUARANTEED ACCURATE BY THE REALTORS® ASSOCIATION OF EDMONTON. COPYRIGHT 2025 BY THE REALTORS® ASSOCIATION OF EDMONTON. ALL RIGHTS RESERVED.Trademarks are owned or controlled by the Canadian Real Estate Association (CREA) and identify real estate professionals who are members of CREA (REALTOR®, REALTORS®) and/or the quality of services they provide (MLS®, Multiple Listing Service®)  
Listing information last updated on June 26th, 2025 at 10:03am MDT