

\$290,000 - 53 501 Youville, Edmonton

MLS® #E4439915

\$290,000

2 Bedroom, 2.50 Bathroom, 1,257 sqft

Condo / Townhouse on 0.00 Acres

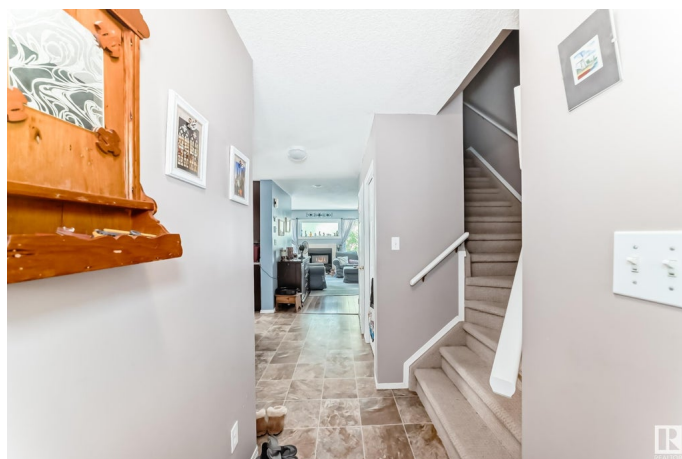
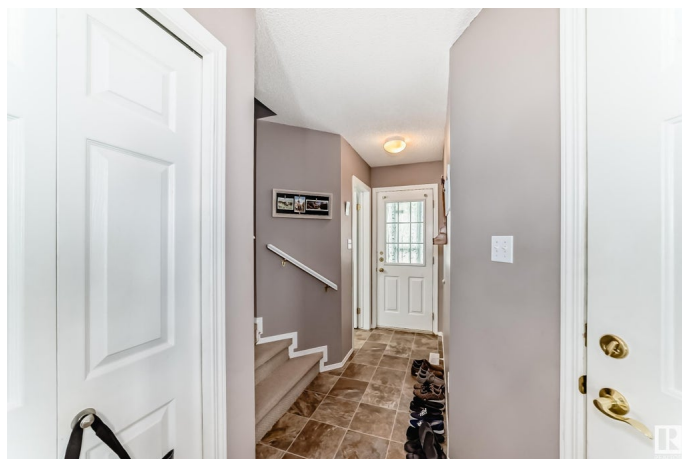
Tawa, Edmonton, AB

Welcome to this 1257 sq. ft. two-storey townhome with attached single garage and numerous updatesâ€”truly move-in ready! Bright and airy main floor features large windows, spacious living room and dining area, and a beautifully renovated kitchen with brand new cabinets, countertops, and upgraded flooring. Upstairs offers two oversized bedrooms, each with a 4-piece en-suite and walk-in closet. The partially finished basement includes a cozy den/flex room and room for future development. Enjoy a private, landscaped yard with a raised deckâ€”perfect for relaxing or entertaining. Low condo fees add to the great value of this home. Donâ€™t miss your chance to own this stylish, and conveniently located home! Just a 5-minute walk to Grey Nuns Hospital and shopping, with public transit, schools, parks and all major roadways just minutes away!!

Built in 1993

Essential Information

| | |
|------------|-----------|
| MLS® # | E4439915 |
| Price | \$290,000 |
| Bedrooms | 2 |
| Bathrooms | 2.50 |
| Full Baths | 2 |
| Half Baths | 1 |



| | |
|----------------|-------------------|
| Square Footage | 1,257 |
| Acres | 0.00 |
| Year Built | 1993 |
| Type | Condo / Townhouse |
| Sub-Type | Half Duplex |
| Style | 2 Storey |
| Status | Active |

Community Information

| | |
|-------------|-----------------|
| Address | 53 501 Youville |
| Area | Edmonton |
| Subdivision | Tawa |
| City | Edmonton |
| County | ALBERTA |
| Province | AB |
| Postal Code | T6L 6T8 |

Amenities

| | |
|-----------|---|
| Amenities | Deck, No Smoking Home, Vinyl Windows, See Remarks |
| Parking | Single Garage Attached |

Interior

| | |
|-------------------|--|
| Interior Features | ensuite bathroom |
| Appliances | Dishwasher-Built-In, Fan-Ceiling, Oven-Microwave, Refrigerator, Stove-Electric, Washer, Window Coverings |
| Heating | Forced Air-1, Natural Gas |
| Stories | 2 |
| Has Basement | Yes |
| Basement | Full, Partially Finished |

Exterior

| | |
|-------------------|--|
| Exterior | Wood, Stucco, Vinyl |
| Exterior Features | Fenced, Flat Site, Golf Nearby, Landscaped, Playground Nearby, Schools, Shopping Nearby, See Remarks |
| Roof | Asphalt Shingles |
| Construction | Wood, Stucco, Vinyl |
| Foundation | Concrete Perimeter |

Additional Information

| | |
|----------------|----------------|
| Date Listed | June 2nd, 2025 |
| Days on Market | 4 |
| Zoning | Zone 29 |
| Condo Fee | \$187 |

DATA IS DEEMED RELIABLE BUT IS NOT GUARANTEED ACCURATE BY THE REALTORS® ASSOCIATION OF EDMONTON. COPYRIGHT 2025 BY THE REALTORS® ASSOCIATION OF EDMONTON. ALL RIGHTS RESERVED. Trademarks are owned or controlled by the Canadian Real Estate Association (CREA) and identify real estate professionals who are members of CREA (REALTOR®, REALTORS®) and/or the quality of services they provide (MLS®, Multiple Listing Service®)

Listing information last updated on June 6th, 2025 at 3:32am MDT