

## \$375,000 - 229 9148 23 Avenue, Edmonton

MLS® #E4438769

**\$375,000**

0 Bedroom, 0.00 Bathroom,  
Office on 0.00 Acres

Parsons Industrial, Edmonton, AB

Approx 1,000 sq.ft. of office space FOR SALE in the highly visible Square on 23rd. 2nd floor space offers 4 private offices (3 with windows), reception area, board room (or 5th office - with a window ), kitchen area, and large storage room. Building offers a mix of retail and professional services. Ample parking, and signage available. Building also features an elevator and is handicap accessible. This would make a great space for professionals (medical, finance, law, etc) Great accessibility to major roadways such as the Whitemud and Anthony Henday.

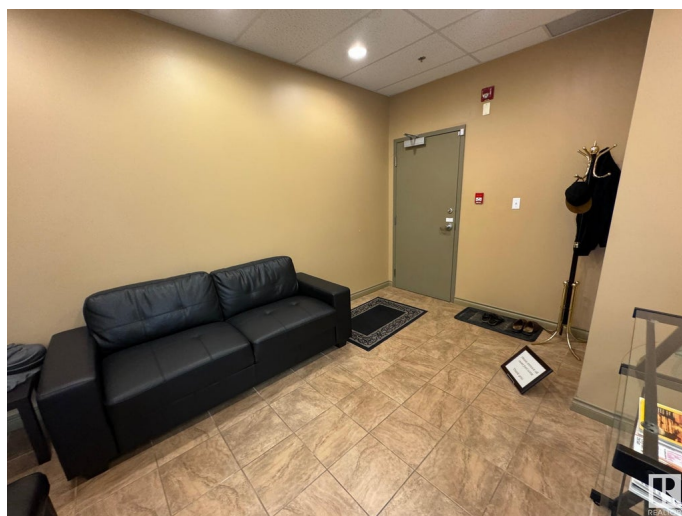
Built in 2008

### Essential Information

MLS® #	E4438769
Price	\$375,000
Bathrooms	0.00
Acres	0.00
Year Built	2008
Type	Office
Status	Active

### Community Information

Address	229 9148 23 Avenue
Area	Edmonton
Subdivision	Parsons Industrial



City	Edmonton
County	ALBERTA
Province	AB
Postal Code	T6N 1H9

### **Exterior**

Exterior	Wood Frame
Construction	Wood Frame

### **Additional Information**

Date Listed	May 27th, 2025
Days on Market	21
Zoning	Zone 41

DATA IS DEEMED RELIABLE BUT IS NOT GUARANTEED ACCURATE BY THE REALTORS® ASSOCIATION OF EDMONTON. COPYRIGHT 2025 BY THE REALTORS® ASSOCIATION OF EDMONTON. ALL RIGHTS RESERVED. Trademarks are owned or controlled by the Canadian Real Estate Association (CREA) and identify real estate professionals who are members of CREA (REALTOR®, REALTORS®) and/or the quality of services they provide (MLS®, Multiple Listing Service®)

Listing information last updated on June 17th, 2025 at 5:47am MDT