

\$240,000 - 200 410 Stafford Drive, Lethbridge

MLS® #E4432786

\$240,000

0 Bedroom, 0.00 Bathroom,
Office on 0.00 Acres

South Lethbridge City, Lethbridge, AB

Fully Developed Unit: Includes several offices,
open work area and reception. Central

Location: Conveniently situated in the heart of
downtown, the property offers immediate
access to a wide range of nearby amenities,

including restaurants, shops, professional

services, and public transit. Functionality:

Property can uniquely accommodate a wide

variety of professional users. Elevator

Serviced Building and professionally managed
property.

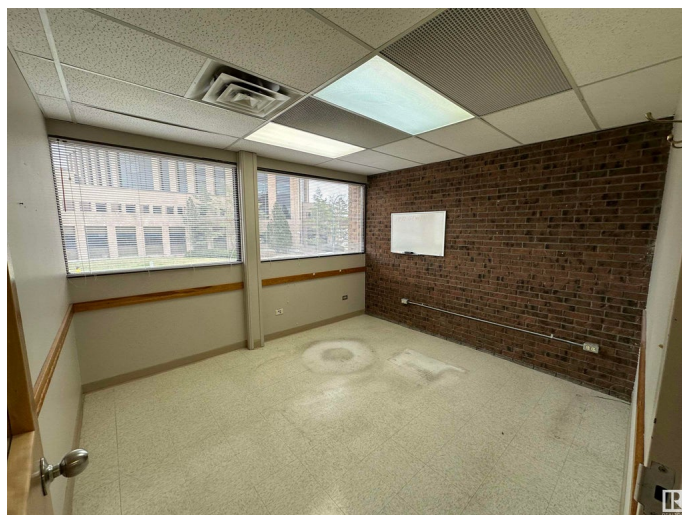
Built in 1970

Essential Information

MLS® #	E4432786
Price	\$240,000
Bathrooms	0.00
Acres	0.00
Year Built	1970
Type	Office
Status	Active

Community Information

Address	200 410 Stafford Drive
Area	Lethbridge
Subdivision	South Lethbridge City
City	Lethbridge
County	ALBERTA



Province AB
Postal Code T1J 2L2

Exterior

Exterior Mixed
Construction Mixed

Additional Information

Date Listed April 24th, 2025
Days on Market 12
Zoning Zone RUR1

DATA IS DEEMED RELIABLE BUT IS NOT GUARANTEED ACCURATE BY THE REALTORS® ASSOCIATION OF EDMONTON. COPYRIGHT 2025 BY THE REALTORS® ASSOCIATION OF EDMONTON. ALL RIGHTS RESERVED.Trademarks are owned or controlled by the Canadian Real Estate Association (CREA) and identify real estate professionals who are members of CREA (REALTOR®, REALTORS®) and/or the quality of services they provide (MLS®, Multiple Listing Service®)
Listing information last updated on May 6th, 2025 at 6:32pm MDT