

\$639,000 - 5616 Juchli Avenue, Edmonton

MLS® #E4429650

\$639,000

3 Bedroom, 2.50 Bathroom, 2,056 sqft

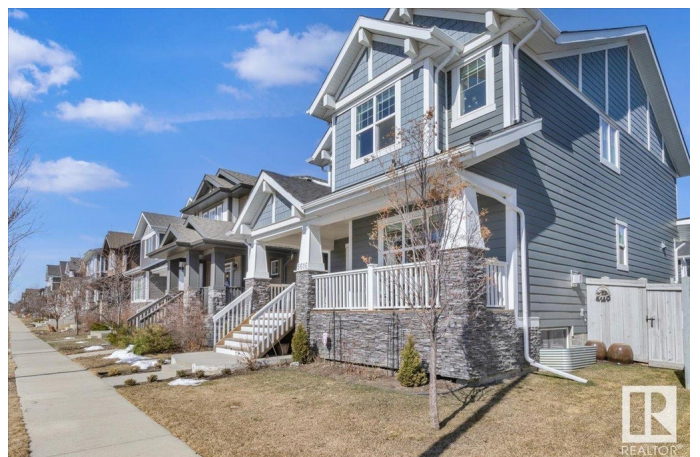
Single Family on 0.00 Acres

Griesbach, Edmonton, AB

Rarely does a home or owner w THIS MUCH CARE hit the market—especially on one of Griesbach’s best streets. Nestled in a quiet pocket, steps to trails, parks, & shops, this beauty is full of THOUGHTFUL UPGRADES. AC & GARAGE HEATER, HARDWOOD FLOORS, CUSTOM WINDOW COVERINGS, GAS FP, COFFERED CEILING in living room, and a smart flex room FACING kitchen (HELLO PARENTS! Eyes on kids from any room on main flr). CHEF’S DREAM w QUARTZ counters (THROUGHOUT HOUSE TOO), HOOD FAN, UPGRADED and some NEW APPLIANCES inc a gorgeous FRIDGE—even a microwave OVEN! Also the LAYOUT. WRAPAROUND ISLAND w tons of eat up & prep space, & DBL DOOR PANTRY! MAIN FLOOR LAUNDRY is MASSIVE w storage! Going up, primary w VAULTED CEILINGS is flooded w natural light throughout, inc in walk-in closet and double vanity ensuite! Bonus room is perfectly sized. Bsmt layout couldn't be more efficient. Backyard has a bit of everything- spacious VINYL deck, a heated garage, additional parking pad, & professionally landscaped front & back.

Built in 2015

Essential Information



MLS® #	E4429650
Price	\$639,000
Bedrooms	3
Bathrooms	2.50
Full Baths	2
Half Baths	1
Square Footage	2,056
Acres	0.00
Year Built	2015
Type	Single Family
Sub-Type	Detached Single Family
Style	2 Storey
Status	Active

Community Information

Address	5616 Juchli Avenue
Area	Edmonton
Subdivision	Griesbach
City	Edmonton
County	ALBERTA
Province	AB
Postal Code	T5E 6T6

Amenities

Amenities	Air Conditioner, Deck, Front Porch, No Smoking Home
Parking	Double Garage Detached, Heated, Insulated, Parking Pad Cement/Paved, Rear Drive Access, Stall

Interior

Interior Features	ensuite bathroom
Appliances	Air Conditioning-Central, Dishwasher-Built-In, Dryer, Garage Control, Garage Opener, Hood Fan, Oven-Microwave, Refrigerator, Stove-Electric, Washer, Window Coverings, Garage Heater
Heating	Forced Air-1, Natural Gas
Fireplace	Yes
Fireplaces	Mantel
Stories	2
Has Basement	Yes
Basement	Full, Unfinished

Exterior

Exterior	Wood, Hardie Board Siding
Exterior Features	Back Lane, Fenced, Landscaped, Playground Nearby, Public Transportation, Schools, Shopping Nearby
Roof	Asphalt Shingles
Construction	Wood, Hardie Board Siding
Foundation	Concrete Perimeter

Additional Information

Date Listed April 8th, 2025

Days on Market 16

Zoning Zone 27

DATA IS DEEMED RELIABLE BUT IS NOT GUARANTEED ACCURATE BY THE REALTORS® ASSOCIATION OF EDMONTON. COPYRIGHT 2025 BY THE REALTORS® ASSOCIATION OF EDMONTON. ALL RIGHTS RESERVED. Trademarks are owned or controlled by the Canadian Real Estate Association (CREA) and identify real estate professionals who are members of CREA (REALTOR®, REALTORS®) and/or the quality of services they provide (MLS®, Multiple Listing Service®)

Listing information last updated on April 24th, 2025 at 2:32pm MDT