

\$788,000 - 215 Glenridding Ravine Road, Edmonton

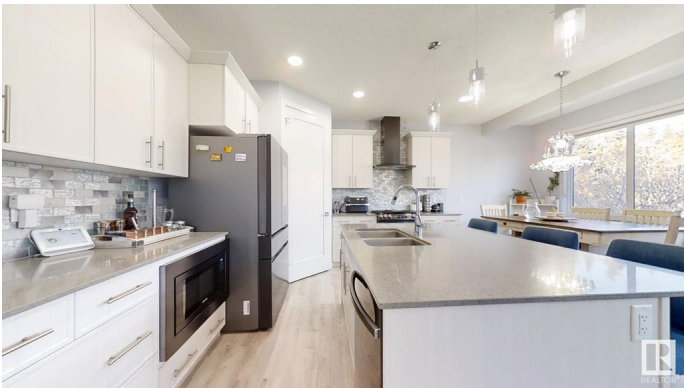
MLS® #E4424466

\$788,000

4 Bedroom, 4.00 Bathroom, 2,665 sqft
Single Family on 0.00 Acres

Glenridding Ravine, Edmonton, AB

Step into modern luxury with this stunning 2023-built 2-storey home, perfectly positioned on a massive 723.98 sq m lot backing onto a serene ravine. Designed for both comfort and function, the upper level offers three spacious bedrooms, including a lavish primary suite, a versatile bonus room, and a convenient laundry room. The main floor impresses with a sleek kitchen, a full spice kitchen, a bright living and dining area, plus a bedroom and full bath—ideal for guests or multi-generational living. The unfinished basement, with a separate entrance, is ready for your vision. Outside is a double attached 23'6" x 22'1" garage that provides ample parking and storage. Close to all major transportation routes and amenities, this stunning home has unparalleled views in a prime location, an opportunity not to be missed.



Built in 2023

Essential Information

MLS® #	E4424466
Price	\$788,000
Bedrooms	4
Bathrooms	4.00
Full Baths	4
Square Footage	2,665

Acres	0.00
Year Built	2023
Type	Single Family
Sub-Type	Detached Single Family
Style	2 Storey
Status	Active

Community Information

Address	215 Glenridding Ravine Road
Area	Edmonton
Subdivision	Glenridding Ravine
City	Edmonton
County	ALBERTA
Province	AB
Postal Code	T6W 5C2

Amenities

Amenities	Ceiling 9 ft., Closet Organizers, No Animal Home, No Smoking Home
Parking	Double Garage Attached

Interior

Interior Features	ensuite bathroom
Appliances	Dishwasher-Built-In, Dryer, Garage Control, Garage Opener, Hood Fan, Refrigerator, Stove-Electric, Stove-Gas, Washer
Heating	Forced Air-1, Natural Gas
Fireplace	Yes
Fireplaces	Glass Door
Stories	2
Has Basement	Yes
Basement	Full, Unfinished

Exterior

Exterior	Wood, Metal, Vinyl
Exterior Features	Airport Nearby, Backs Onto Park/Trees, Golf Nearby, Playground Nearby, Public Transportation, Ravine View, Schools, Shopping Nearby
Roof	Asphalt Shingles
Construction	Wood, Metal, Vinyl
Foundation	Concrete Perimeter

School Information

Elementary	St John XX111;Lendrum
Middle	JH Picard;Donald Getty
High	Strathcona; Arch MacDonald

Additional Information

Date Listed	March 7th, 2025
-------------	-----------------

Days on Market	98
----------------	----

Zoning	Zone 56
--------	---------

DATA IS DEEMED RELIABLE BUT IS NOT GUARANTEED ACCURATE BY THE REALTORS® ASSOCIATION OF EDMONTON. COPYRIGHT 2025 BY THE REALTORS® ASSOCIATION OF EDMONTON. ALL RIGHTS RESERVED.Trademarks are owned or controlled by the Canadian Real Estate Association (CREA) and identify real estate professionals who are members of CREA (REALTOR®, REALTORS®) and/or the quality of services they provide (MLS®, Multiple Listing Service®)

Listing information last updated on June 13th, 2025 at 7:17pm MDT