

\$208,500 - 216 12550 140 Avenue, Edmonton

MLS® #E4423899

\$208,500

2 Bedroom, 2.00 Bathroom, 840 sqft

Condo / Townhouse on 0.00 Acres

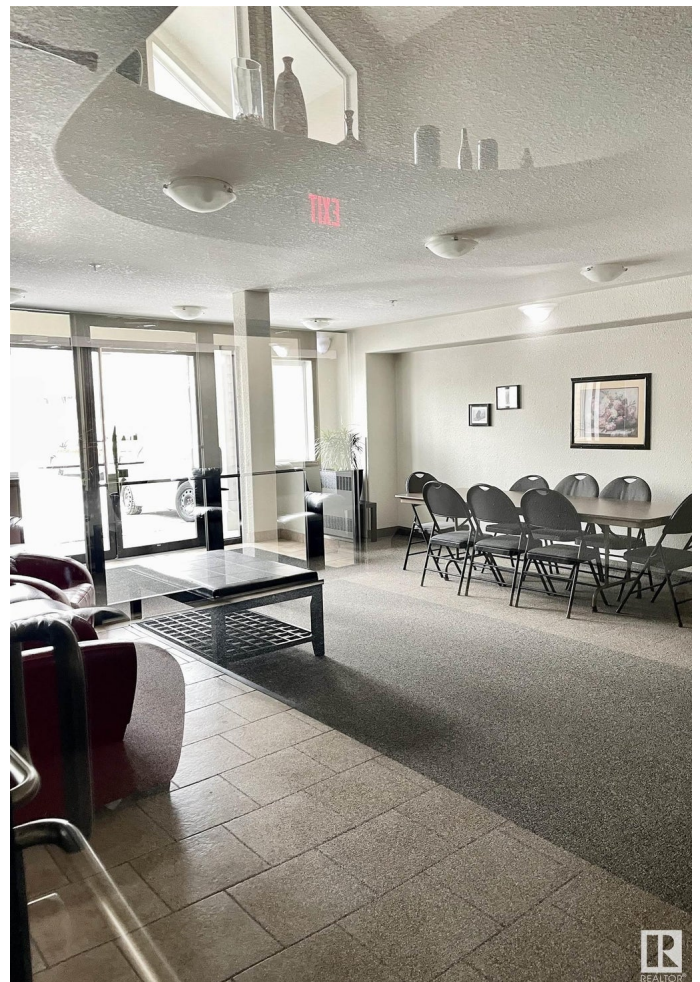
Baranow, Edmonton, AB

Remarkable 2 bedroom condo with 2 full bathrooms and heated underground parking, in a very well kept complex. The kitchen has an island, glass tile backsplash appliances are now black and the over the range microwave is stainless steal, there are lots of cupboards, and is open to the dining area. The bright living room has a/c and sliding door that goes out to the south facing sunny balcony. Two spacious bedrooms, primary bedroom has a walk-thru closet to the 4 piece ensuite. Loads of storage in this unit plus in suite laundry. Walking distance to all amenities and easy access to Yellowhead and Anthony Henday!

Built in 2004

Essential Information

MLS® #	E4423899
Price	\$208,500
Bedrooms	2
Bathrooms	2.00
Full Baths	2
Square Footage	840
Acres	0.00
Year Built	2004
Type	Condo / Townhouse
Sub-Type	Lowrise Apartment
Style	Single Level Apartment



Status	Active
--------	--------

Community Information

Address	216 12550 140 Avenue
Area	Edmonton
Subdivision	Baranow
City	Edmonton
County	ALBERTA
Province	AB
Postal Code	T5X 6J4

Amenities

Amenities	Intercom, Parking-Visitor, Secured Parking, Security Door, Social Rooms, Sprinkler System-Fire, Storage-In-Suite
Parking Spaces	1
Parking	Parkade, Underground

Interior

Interior Features	ensuite bathroom
Appliances	Dishwasher-Built-In, Fan-Ceiling, Garage Control, Microwave Hood Fan, Refrigerator, Stacked Washer/Dryer, Stove-Electric, See Remarks
Heating	Baseboard, Hot Water, Natural Gas
# of Stories	4
Stories	1
Has Basement	Yes
Basement	None, No Basement

Exterior

Exterior	Wood, Vinyl
Exterior Features	Public Transportation, Schools, Shopping Nearby
Roof	Asphalt Shingles
Construction	Wood, Vinyl
Foundation	Concrete Perimeter

Additional Information

Date Listed	March 3rd, 2025
Days on Market	76
Zoning	Zone 27
Condo Fee	\$555

DATA IS DEEMED RELIABLE BUT IS NOT GUARANTEED ACCURATE BY THE REALTORS® ASSOCIATION OF EDMONTON. COPYRIGHT 2025 BY THE REALTORS® ASSOCIATION OF EDMONTON. ALL RIGHTS RESERVED.Trademarks are owned or controlled by the Canadian Real Estate Association (CREA) and identify real estate professionals who are members of CREA (REALTOR®, REALTORS®) and/or the quality of services they provide (MLS®, Multiple Listing Service®)

Listing information last updated on May 18th, 2025 at 2:32am MDT